



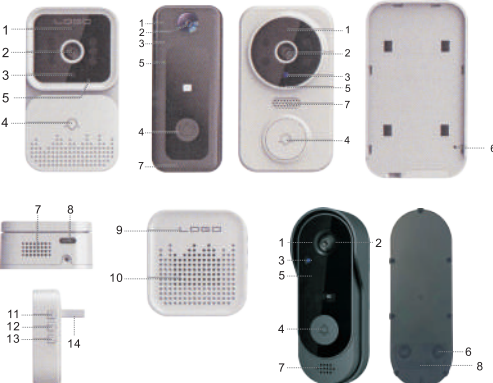
智能可视门铃

使用说明书 V1.0



使用前请仔细阅读，并妥善保管以备后续参考

### 一、外观介绍:



#### 门铃:

- 1) 咪头 2) 镜头 3) 光敏 4) 门铃键
- 5) 指示灯 6) 复位孔 7) 喇叭 8) 充电口

#### 叮咚:

- 9) 指示灯 10) 喇叭 11) 配对键 12) 音量大小
- 13) 音乐切换 14) USB 插接口

### 二、APP 下载方式:

Android 手机可在自带应用市场或应用宝搜索【智能生活】进行下载; IOS 手机在 APP Store 中搜索【智能生活】下载;

注: 该款门铃的功能仅在 APP4.3.0 及以上版本上支持, 为用户更佳体验, 请更新或下载最新版本。



### 三、APP 注册:

1. 如第一次下载使用, 请点击“试用”或已有账号, 则直接点击“登录”
2. 点击“注册”, 阅读“隐私政策”, 点击“同意”, 输入合法的手机号码或电子邮箱地址并单击“继续”, 然后输入验证码登录 APP。  
(“立即体验”登录不能正常添加门铃设备, 请注册后登录。)

### 四、添加设备:

1. 打开手机自带蓝牙、定位权限功能。
2. 按门铃开机, 工作指示灯闪烁, 设备进入配对模式。
3. 打开 APP 进入“首页”, 点击页面右上角“+”, APP 将自动扫描发现设备, 点击“添

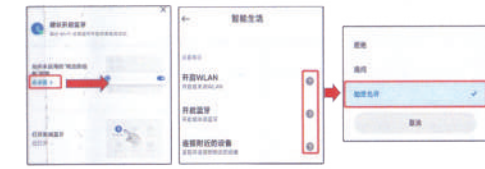


(备注: a. 如未自动搜索到设备, 请点击下图“打开蓝牙”, 前往去设置“允许本应用访问附近的设备权限”;



b. 进入权限管理, 开启 WLAN、蓝牙, 连接附近的设备等权限, 选择【始终允

许】。



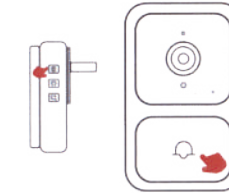
4. 添加门铃后, 输入 2.4GHz 无线网络账号和密码点击“下一步”, 连接时, 请保持路由器、手机与门铃尽可能靠近, 添加成功后, 点击“完成”。

(备注: 如未连接成功, 请复位设备后重新连接)



5. 将设备充满电, 安装在 Wi-Fi 信号稳定且有效范围内智能门铃主机添加成功。

### 五、门铃与叮咚机匹配:



1. 叮咚机(左)接通电源。
2. 长按叮咚机配对键 3 秒(如图), 指示灯闪烁。
3. 按一下门铃键(图右), 叮咚机响铃, 即匹配成功。

### 六、手机信息推送

进入手机-设置-通知与状态栏-应用通知管理, 打开 APP 通知权限, 开启允许通知

悬浮、收藏、声音提醒等通知功能。

(备注: 因手机型号不同, 操作界面、选项管理, 请自行选择, 请自主理解)

### 七、功能介绍:

1. 信息推送: 当访客按门铃时, 手机会收到 APP 推送信息, 点击推送弹窗进入视频通话。
2. 视频通话: 按任意免提键对讲, 打开喇叭监听。
3. 门铃共享: 进入 APP 实时界面, 点击右上角设置-共享设备-添加共享, 输入已注册的账号
4. 低电量提醒: 当电池电量比较低时, APP 会推送低电量提醒, 请及时充电。

### 八、注意事项

- 设备为低功耗门铃, 无人按门铃时, 设备进入休眠模式, 属正常现象。
- 因手机型号不同, 推送设置不同, 请根据需求设置。
- 仅支持 2.4G WiFi, 暂不支持 5G 应带有特殊符号的 WiFi。
- 由于金属易干扰 WiFi 信号, 请尽量避免将设备安装在金属壁上。



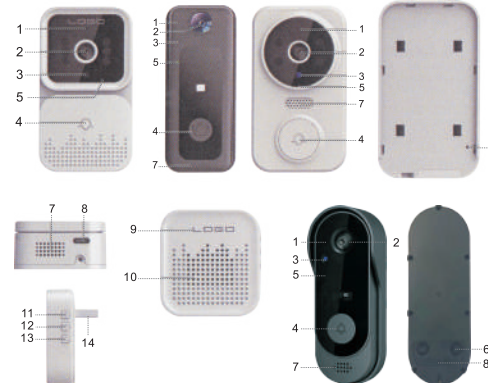
Smart Visual Doorbell

Instruction manual V1.0



Please read it carefully before use and keep it for future reference

### I. Appearance introduction:



#### Doorbell

- 1) Mic 2) Lens 3) Light sensitive 4) Doorbell key
- 5) Indicator light 6) Reset 7) Speaker 8) Charging port

#### Ding dong:

- 9) Indicator light 10) Speaker 11) Pairing key
- 12) Music toggle 13) Volume size 14) USB plug port

### II. Download mode of APP:

For Android phones, it can be downloaded from its own app market or App Treasure Search (Smart Life). For IOS phones, search for "Smart Life" in the APP Store to download.

Note: The function of this doorbell is only supported on APP 4.3.0 and above, for a better user experience, please update or download the latest version.



### III. APP registration:

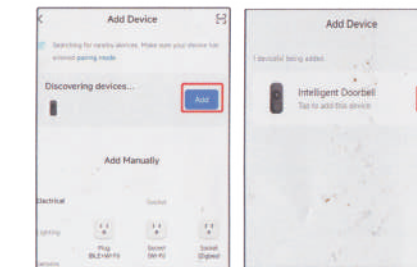
1. For the first download and use, please click "Register"; if you have an account, click "Login".
2. Click "Register", read "Privacy Policy", and click "Agree". Enter a valid mobile phone number or email address and click Continue. Then enter the verification code to log in to the APP. ("Try Now" login can not add doorbell devices normally, please register and log in.)

### IV. Adding a device:

1. Turn on the bluetooth and location permission functions of the mobile phone

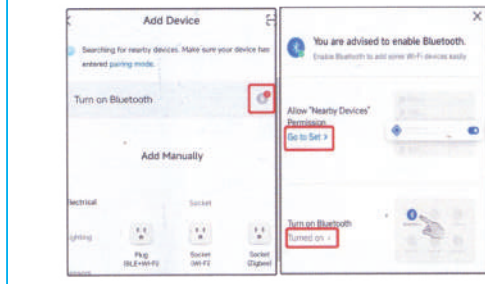
2. Press the doorbell button to start the device, and the work indicator blinks. The device enters the network mode.

3. Open the APP, enter the "Home page", click "+" on the upper right corner of the page, the APP will automatically scan and discover the device, click "Add".



Note:

- a. If the device is not automatically searched, please click "Turn on Bluetooth" in the picture below and set "Allow device permissions near this application".



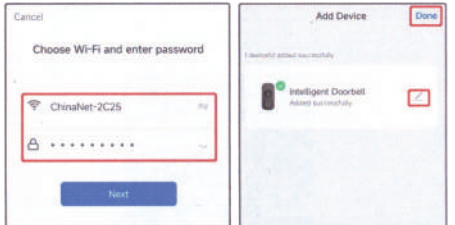
b. Access permission management, enable WLAN, Bluetooth, and nearby devices, and select Always Allow.



4. After adding a doorbell, enter your 2.4ghz wireless network account and password and click "Next". When connecting, keep your router, mobile

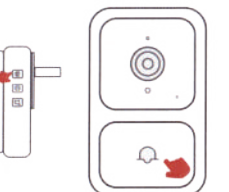
phone and doorbell as close as possible. After adding a doorbell, click "Finish".

(Note: If the connection is not successful, please reset the device and reconnect)



5. Fully charge the device and install it within the stable and effective range of Wifi signal. The smart doorbell host is successfully added.

### V. Doorbell and ding Dong matching:



1. Power on the ding Dong machine (left):
2. Long press the pairing button of ding Dong machine for 3 seconds (as shown in the picture), and the indicator blinks.
3. Press the doorbell button (right), ding Dong machine rings, that is, the match is successful.

### VI. Mobile message push

Enter mobile phone - Settings - notification and status bar - Application notification management, open APP notification permission, enable notification, suspension, lock screen, sound reminder and other notification functions.

(Note: Due to different mobile phone models, the operation interface and options are different, please choose independently)

### VII. Function introduction:

1. Message push: When visitors ring the doorbell, the mobile phone will receive the APP push message, click the push popup to enter the video call.
2. Video call: Hold down the microphone key to talk to each other, open the speaker to listen.
3. Doorbell sharing: Enter the real time interface of APP, click Settings - Share device - Add Share - enter the registered account
4. Low battery reminder: When the battery is low, the APP will push low battery reminder, please charge in time.

### VIII. Matters needing attention

- The device is a low-power doorbell. When no one rings the doorbell, the

device goes into hibernation and goes offline, which is normal

- The push Settings vary according to mobile phone models. Set the Settings as required
- Only 2.4g Wifi is supported, but 5G or Wifi with special symbols is not supported.
- Do not install the device on a metal wall because it may interfere with Wifi signals.
- The device supports TF card video storage. Do not insert or remove the memory card when it is powered on to avoid loss.